

COMUNE DI CERVETERI
CITTÀ METROPOLITANA DI ROMA CAPITALE

DOCUMENTO:
Piano Eliminazione
Barriere Architettoniche
(PEBA)

OGGETTO:
Strategie d'intervento

COMMITTENTE:
COMUNE DI CERVETERI
PIAZZA RISORGIMENTO N.1 - 00052 CERVETERI (RM)

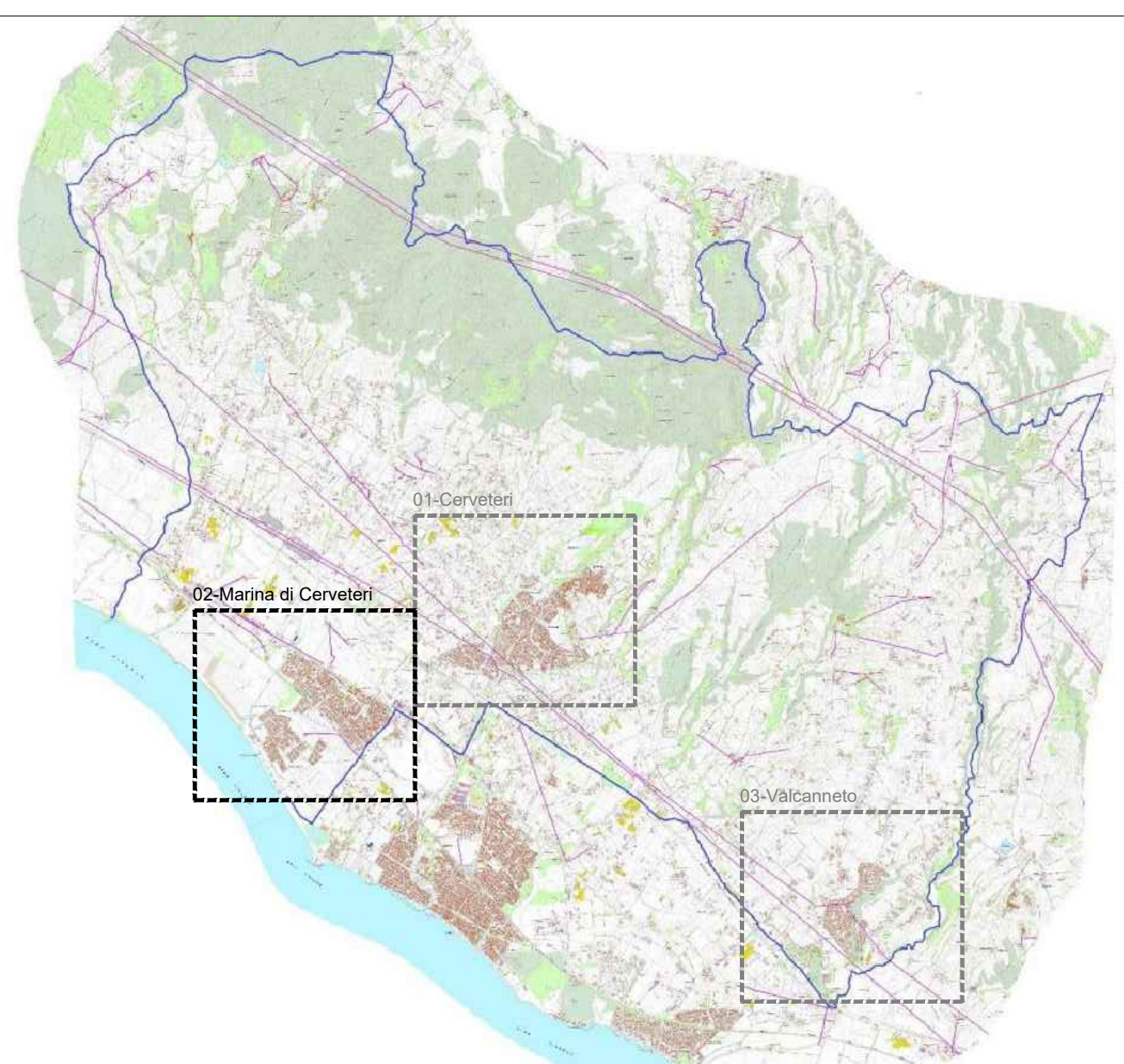
TECNICO:
mtstudio
VIA ARCHIMEDE 181 - 00197 ROMA
06 80691801 - INFO@MTSTUDIO.IT
PROGETTISTA
Arch. Roberto Emplér











DATA:
22/01/2025

STR_04.B
SCALA 1:5000

KEYPLAN



LEGENDA

-  SUPERFICI DI INTERESSE PUBBLICO:
PARCHEGGI, PIAZZE, GIARDINI, PARCHI
-  EDIFICI DI INTERESSE PUBBLICO:
MUNICIPIO, ASL, SCUOLE, CHIESE, MERCATI
-  ASSE DI COLLEGAMENTO
-  POLO COMUNALE
-  POLO SCOLASTICO
-  POLO SPORTIVO
-  POLO VERDE
-  POLO COMMERCIALE/SERVIZI

